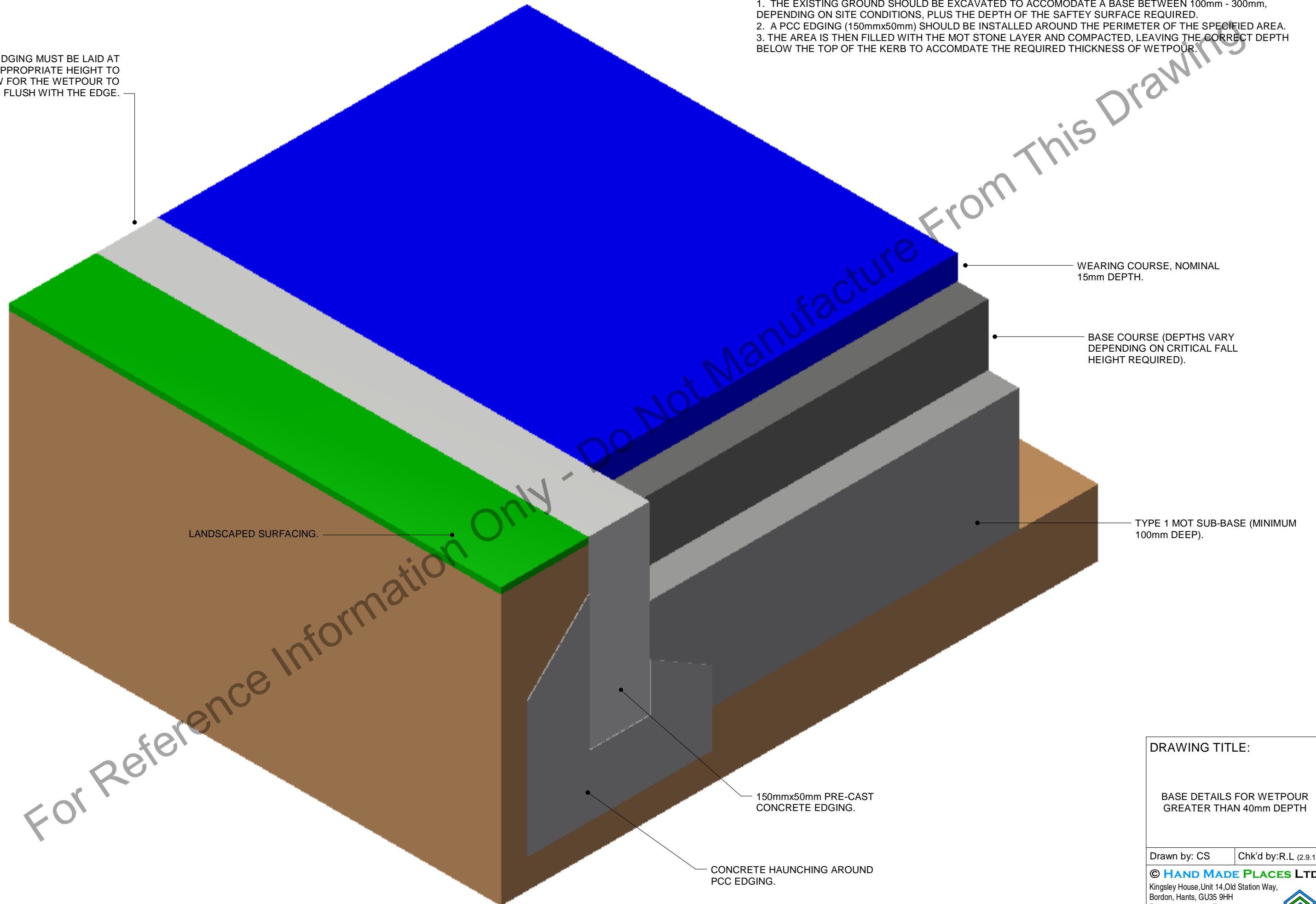


FOR SURFACES GREATER THAN 40mm, IT IS POSSIBLE TO LAY DIRECTLY ONTO TYPE 1 MOT STONE SUB-BASE.

1. THE EXISTING GROUND SHOULD BE EXCAVATED TO ACCOMODATE A BASE BETWEEN 100mm - 300mm, DEPENDING ON SITE CONDITIONS, PLUS THE DEPTH OF THE SAFTEY SURFACE REQUIRED.
2. A PCC EDGING (150mmx50mm) SHOULD BE INSTALLED AROUND THE PERIMETER OF THE SPECIFIED AREA.
3. THE AREA IS THEN FILLED WITH THE MOT STONE LAYER AND COMPACTED, LEAVING THE CORRECT DEPTH BELOW THE TOP OF THE KERB TO ACCOMDATE THE REQUIRED THICKNESS OF WETPOUR.

PCC EDGING MUST BE LAID AT THE APPROPRIATE HEIGHT TO ALLOW FOR THE WETPOUR TO FINISH FLUSH WITH THE EDGE.



DRAWING TITLE:

BASE DETAILS FOR WETPOUR GREATER THAN 40mm DEPTH

Drawn by: CS Chk'd by: R.L (2.9.10)

© **HAND MADE PLACES LTD**  
Kingsley House, Unit 14, Old Station Way,  
Bordon, Hants, GU35 9HH  
Tel 01420 474111 Fax 01420 474222  
e-mail: info@handmadeplaces.co.uk  
www: handmadeplaces.co.uk

