

1. SAIL CANOPIES WILL BE SUPPLIED WITH DISPOSABLE TAGS ON EACH CORNER TO INDICATE THE CORRECT POLE/FIXING POINT

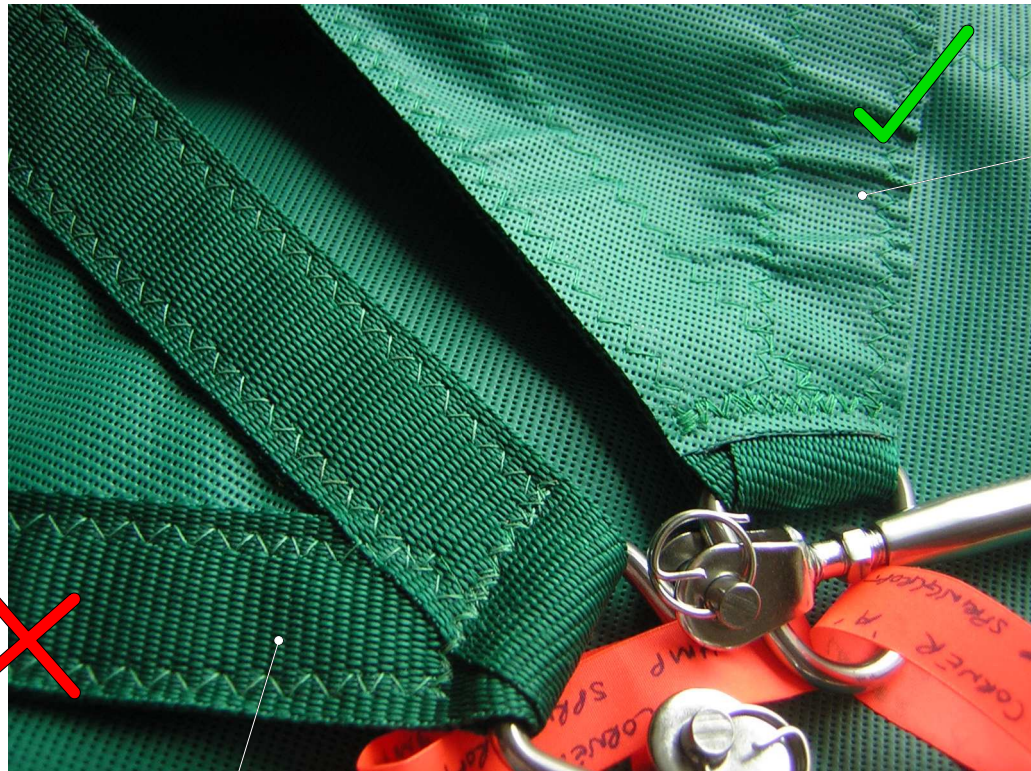


M8 TENSIONER.

SAIL D-RING.

DISPOSABLE LABEL

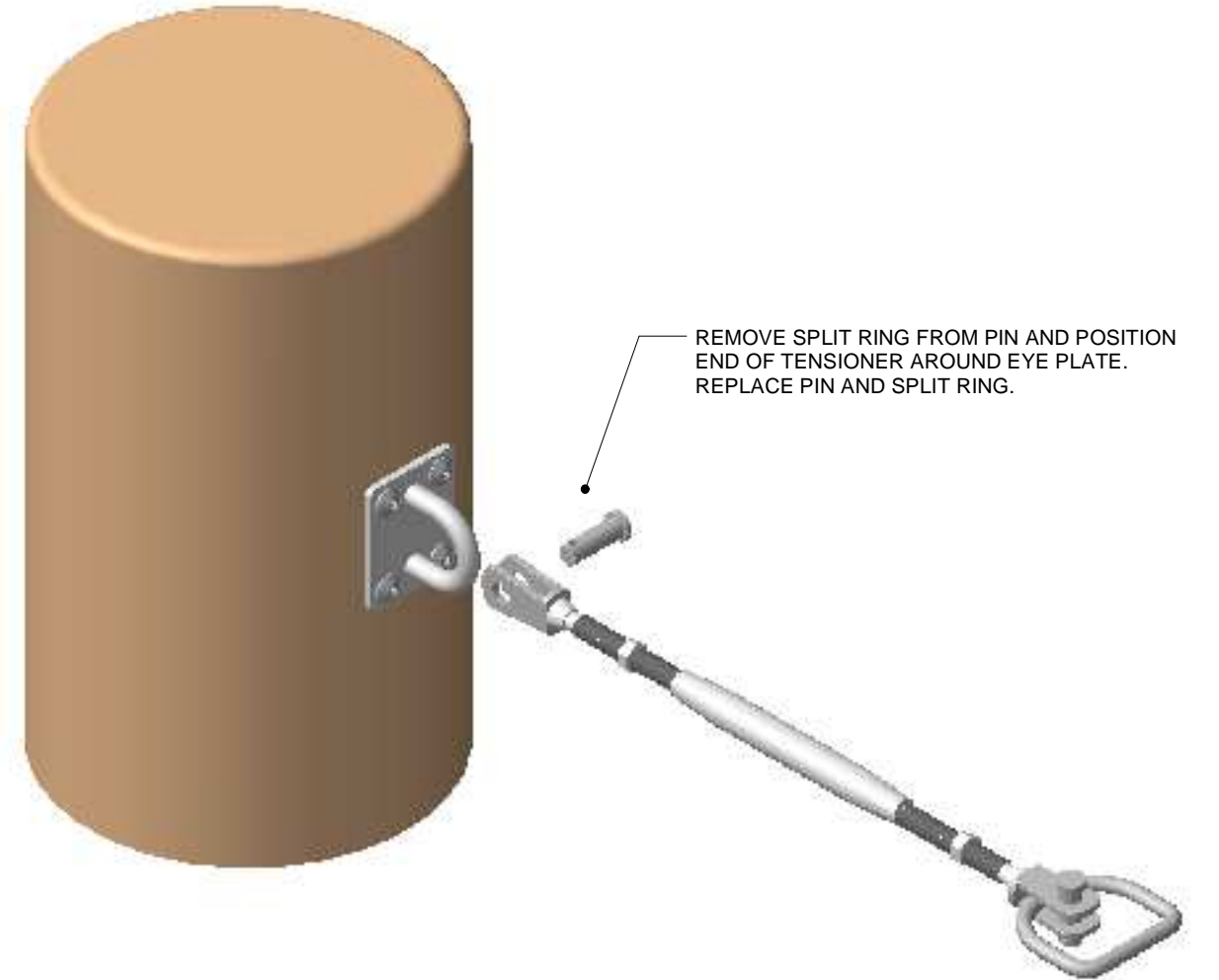
2. THE SAIL SHOULD BE POSITIONED WITH ALL CORNER REINFORCEMENT AND EDGE WEBBING ON THE UNDERSIDE



WEBBING SHOWN ON THE UNDERSIDE.

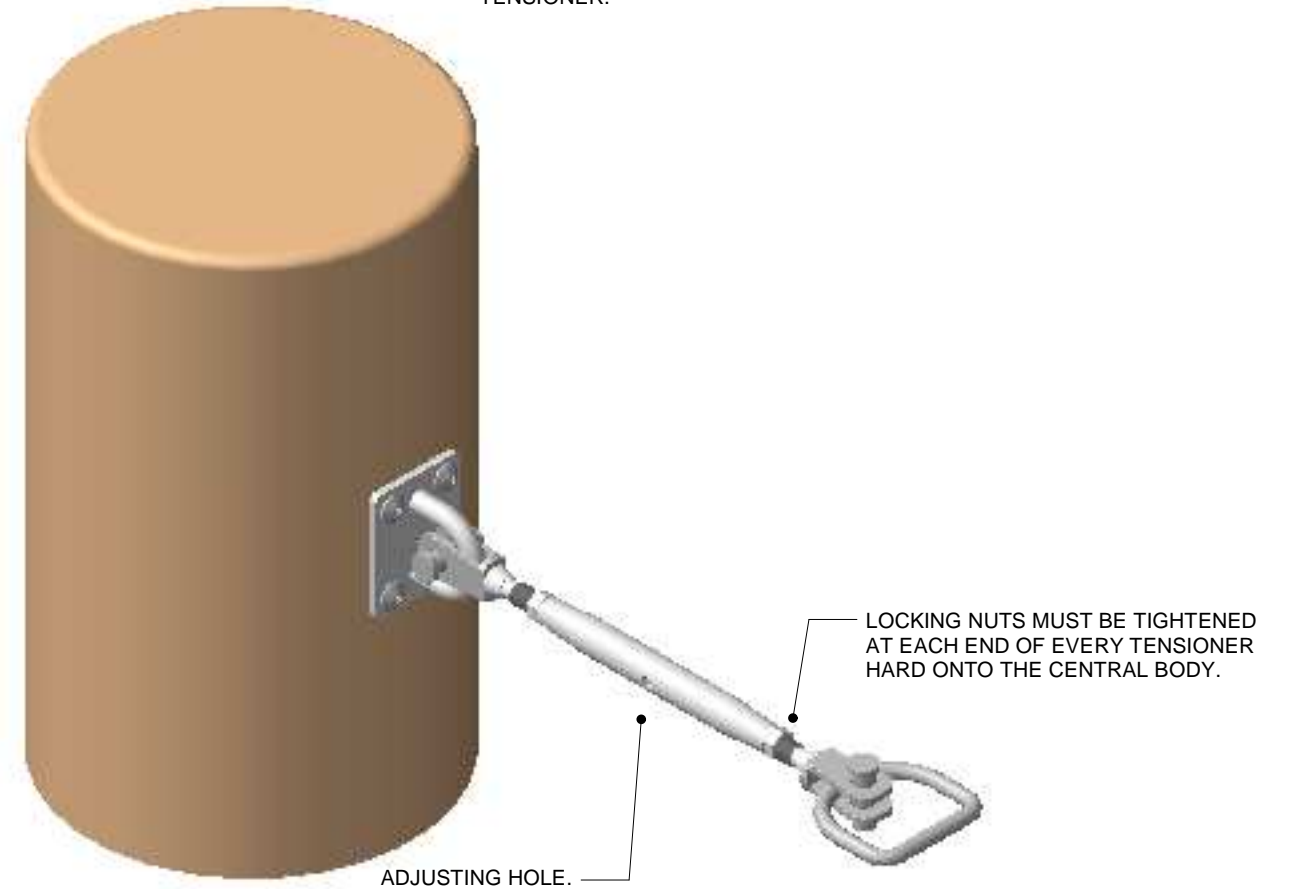
WEBBING SHOWN FACING UPWARDS.

3. WITH THE TENSIONERS OPENED OUT TO THEIR MAXIMUM LENGTH, THE SAIL SHOULD BE ATTACHED TO ALL THE FIXING POINTS.



REMOVE SPLIT RING FROM PIN AND POSITION END OF TENSIONER AROUND EYE PLATE. REPLACE PIN AND SPLIT RING.

4. USING A SCREW DRIVER SMALL ENOUGH TO SLOT INTO THE HOLE IN THE CENTRE OF THE TENSIONER A FEW TURNS AT A TIME  
5. THE SAIL SHOULD BE TIGHT ENOUGH TO REMOVE ALL SLACKNESS AND BE TAUGHT THROUGHOUT, WITH EVEN TENSION ON EACH TENSIONER.



LOCKING NUTS MUST BE TIGHTENED AT EACH END OF EVERY TENSIONER HARD ONTO THE CENTRAL BODY.

ADJUSTING HOLE.